



DON BOSCO NATIONAL FORUM  
FOR THE YOUNG AT RISK



# Statistical Report

June 2023-May 2024



# TABLE OF CONTENTS

➤	<u>National Statistics</u>	i
➤	<u>Summary of National Statistical Analysis</u>	ii
➤	<u>Introduction</u>	01
➤	<u>Goal, Outcome and Key Performing Indicators</u>	02
➤	<u>Data Analysis</u>	03
➤	<u>Institutional Facilities</u>	03
➤	<u>After-care and Room Placement Facilities for Young Adults</u>	04
➤	<u>Collaborative Networks</u>	05
➤	<u>Bridging Skills to Employment</u>	06
➤	<u>Community-Based Programs</u>	07
➤	<u>Self-help Groups/Caring Community Groups</u>	08
➤	<u>Migrant Service</u>	09
➤	<u>Families Reached through Community-Based Programs and Collaborative Networks</u>	10
➤	<u>Lepers and Home for the Aged</u>	11
➤	<u>Camps and Sports Activities</u>	12
➤	<u>Personnel Involved in Young at Risk (YaR) Ministry</u>	13
➤	<u>Salesians involved in SCPCR/JJB/CWC/Other Govt. Bodies</u>	14
➤	<u>Conclusion</u>	15
➤	<u>Summary of Statistical Report</u>	16
➤	<u>Summary of Data Analysis</u>	17

# MESSAGE FROM EXECUTIVE DIRECTOR



## Don Bosco National Forum for the Young at Risk

Bengaluru-Chennai-Delhi-Dimapur-Guwahati-Hyderabad-Kolkata-Mumbai-Panjim-Shillong-Tiruchy

Dear Friends and DB YaR Family,

Greetings, and welcome to a detailed exploration of our organization performance encapsulated in the Statistical Analysis Report 2023-2024.

It is an honor to extend my deep gratitude and sincere appreciation to each province for their tremendous effort and invaluable contributions to the collection of the statistical data for the year 2023-2024.

The collaborative effort and dedication demonstrated by all 11 provinces from collection of data from the grassroots level to the coordinators have resulted in a comprehensive and insightful analysis. Your meticulously collection and sharing data from your respective centers has played a pivotal role in creating a detailed overview of our activities, achievements, and areas for growth.

The compiled statistical data not only serves as a testament to our collective commitment to the mission but also provides a foundation for informed decision-making and strategic planning. The depth of analysis reflects the passion and diligence of each province.

The members of the national team have done a tremendous job synthesizing the raw data into a meaningful narrative that will inform strategic decisions and future planning. By transforming numbers into a compelling story, the analysis brings our progress and challenges into sharp focus. It is a testament to our shared commitment and passion for the Don Bosco YaR Mission.

As we delve into the insights provided by the statistical data, let us use this opportunity to identify areas of excellence, build on our strengths, address areas needing improvement, and advance our shared goals, and collectively work towards the betterment of our community. Your commitment to transparency and collaboration is the driving force behind our success, and I am confident that this data will guide us towards even greater achievements in the future.

I encourage us all to use the document as a springboard for reflection, collaboration, and growth. Let the story reflected in these numbers guide us toward new heights of service, innovation, and community impact.

I am grateful and inspired to take this next step alongside you. Through open communication, shared learning, and relentless dedication to our mission, we will build an even brighter future for those we serve.

I would like to express a word of appreciation and gratitude to Mrs. Moumita Roy Choudhury, the National Project Coordinator, for bringing out this statistical analysis report and designing by Mr. Pratik Dhainje, the Associate Project Coordinator.


With immense appreciation for all you do,

Fr. Joe Prabu  
Executive Director

*For Every Child – Life in Fullness*

Don Bosco House – SPCI  
C 991, Sector 7, Dwarka  
New Delhi 110 077

info@dbyarforum.org +91 88516 53538

STATISTICAL REPORT: June 2023 - May 2024		
 <b>DON BOSCO NATIONAL FORUM FOR THE YOUNG AT RISK</b>		
<b>Interventions with the Young at Risk in the Salesian Provinces of India</b> <b>219 Centers - 125+ Locations - 20 States - 11 Provinces</b>		
Centers & Services		Total
A	Open Shelter, Fit Facility, Reception/Day-Care Centers	25
	No. of Children Reached	5198
B	Children's Home	51
	No. of Children Reached	2426
C	Hostel/Boarding	18
	No. of Children Reached	818
D	Community Centers in Slums & Villages	279
	Total No. of Centers	105
	No. of Families Reached	29184
	No. of Individuals/Adults Reached	19277
	No. of Children Reached	22981
E	Program Presences in Street/Market, Bus/Riy. Station	404
	No. of Centers	128
	No. of Families Reached	6591
	No. of Individuals/Adults Reached	12261
	No. of Children Reached	22556
F	Collaboration with Police Station	43
	No. of Children Reached	654
G	Observational/Correctional Homes/Prison Ministry	29
	No. of Children/ Young Adults Reached	691
H	Bridge course/NIOS/Child Labour Special School/Tution/Coaching Drop-Out Prevention Program	615
	No. of Children Reached	24693
I	Child Rights/Eco Clubs/Youth Clubs/Child Parliament	1132
	No. of Children Reached	30334
J	Substance Abuse: Counselling/Rehabilitation	26
	No. of Children/ Young Adults Reached	14451
K	Foster/Individual/Group/Kinship Care/Adoption/Home Based Care	0
	No. of Children Reached	36
	No. of Families Reached	52
L	Room Placement, Group/Aftercare Centers/Group Care Homes	17
	No. of Young Adults Reached	606
M	Vocational Training Centers	67
	No. of Young Adults Benefitted	11141
N	Job Placement Programs	13
	Young Adults Job Placed	1078
O	Migrants' Desks	24
	No. of Migrant Workers Reached	23894
P	Self-help Groups/Caring Community Groups	832
	No. of Children Reached	9194
Q	Awareness Camps, Medical Camp, Sports Activities	694
	No. of Centers	116
	No. of families Reached	29306
	Individuals/Adults Reached	78831
	No. of Children Reached	81631
R	Lepers, Home Based Care and Home for the Aged	12
	No. of Individuals/Adults Reached	1047
S	Mobile Rescue/Reach Out Services	2
	No. of Children Reached	1700
T	Salesians in SCPCR/JJB/CWC/Other Govt. Bodies	12
U	SDBs in YaR Ministry	226
V	Staff in YaR Ministry	1592
W	Volunteers/Interns in YaR Ministry	975



<b>SUMMARY OF THE DATA ANALYSIS: June 2023 - May 2024</b>	
No. of Institutions & Children's Home	123
No. of Children in Institutions & Children's Home	9133
Room Placement, Group/Aftercare Centers/Group Care Homes	17
No. of Young Adults in After Care/ Room Placement/Group Care Homes	606
No. of Community Based Programs	1815
No. of Children & Young Adults in Community Based Programs	75907
No. of Collaborative Networks	686
No. of Children & Young Adults Reached through Collaborative Networks	41498
Migrants' Desks	24
No. of Migrant Workers Reached	23894
No. of Families Reached	65133
No. of Individual reached(Except Children)	110369
Awareness Camps, Medical Camps, Sports Activities	694
No. of Children & Young Adults in Camps and Sports Activities	81631
Vocational Training Centers	67
No. of Young Adults Benefitted	11141
Job Placement Programmes	13
Young Adults Job Placed	1078
Lepers,Home Based Care and Home for the Aged	12
No. of Individuals/Adults Reached	1047
Self-help Groups/Caring community groups	832
No. of Children Reached	9194
Salesian in SCPCR/JJB/CWC/Other Govt. Bodies	12
Personnel involved in YaR Ministry (SDB, Staff , Volunteers, Interns)	2793

# INTRODUCTION

The Don Bosco National Forum for the Young at Risk is a network dedicated to protection, nurturing and empowering vulnerable, at risk and marginalized children and young adults. This Forum operates across 219 centers in over 125 locations, spanning 20 states and union territories of India establishing its far-reaching impact on the welfare of the young individuals.

The DB YaR Forum publishes its annual statistical data analysis every year as its commitment to data-driven, decision-making and consistent development. This document is a compilation of the statistics of the collaborative efforts and meticulous approach of 11 provinces covering June 2023-May 2024.

These 11 chosen provinces include - Bangalore (INK), Chennai (INM), Dimapur (IND), Guwahati (ING), Hyderabad (INH), Kolkata (INC), Mumbai (INB), New Delhi (INN), Panjim (INP), Shillong (INS), and Tiruchy (INT)- form the backbone of the YaR Ministry's operations. Each province outlines to include the regional hubs and surrounding centers, ensuring comprehensive coverage of the community needs.

The systematic data collection is multifolded providing valuable insights into the program effectiveness, highlights areas for potential improvement and tracks progress over time. By analyzing the data the impact of the initiatives can be measured, identifying the probable gaps and challenges in the services rendered, refining the strategies to address the needs of the communities.

Evidently, the data-centric approach echoes the unwavering commitment to the mission of empowering the vulnerable young adults, creating opportunities for them and fostering a positive social change enabling the organizations to adopt methods, distribute resources effectively and constantly enhance its abilities to make meaningful changes in the lives of the disadvantaged children and young adults across India.



## VISION

Inspired by Don Bosco, our vision is of a world where every child and every young person lives, and grows towards “fullness of life” in secure, enabling environments.

## MISSION

Our mission is to inspire and lead Don Bosco personnel and their collaborators to respond with courage, creativity and commitment to the needs of the Young at Risk and to advocate and collaborate with individuals, civil society organizations and governments to ensure for the Young at Risk caring, enabling environments and opportunities for growth, and development.

## GOAL:

Creating a comprehensive, data-driven platform for similar patterns of performance and challenges across provinces while analyzing the data reveals best practices and consistent standards alinging with the overarching objectives of the organization.

## OUTCOME:

- Overview of the performance of the 11 provinces separately, facilitation and enhancing operation in the long run.
- Focussing on areas where additional support and resources are necessary for better impact and maximizing effectiveness.
- Analyze data to anticipate future requirements, plan strategies, deal with challenges and focus on goals.

## KEY PERFORMANCE INDICATORS:

- The quality of the data will ensure reliable impact with complete information and accurate tracking of data across all provinces.
- The data examines how effectively the resources were used and the operational efficiency of the provinces.
- The data analysis draws the effectiveness of the efforts of the provinces and their respective programs paving the way for collaborations, resource generation and further development.
- The performance level of each provinces indicates their potentials and the trajectory of improvements, identifying and replicating successful strategies in other provinces with lower impact.





# DATA ANALYSIS

## INSTITUTIONAL FACILITIES

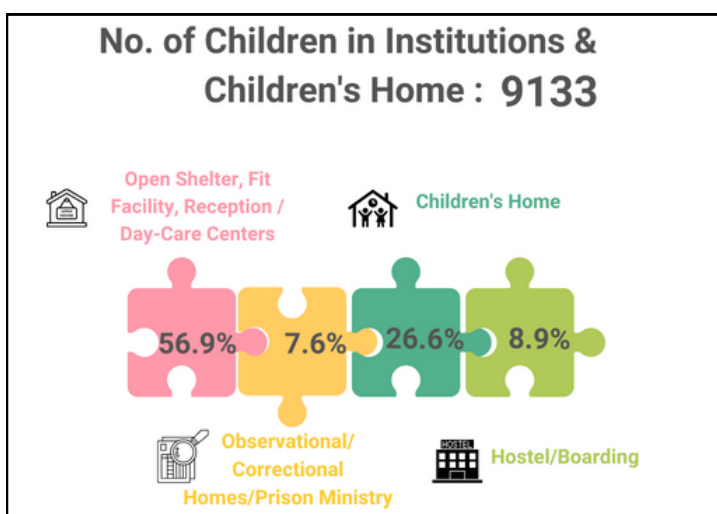
TABLE 1

Components	Bangalore	Chennai	Dimapur	Guwahati	Hyderabad	Kolkata	Mumbai	New Delhi	Panjim	Shillong	Tiruchy	Total
No. of Institutions & Children's Home(Open Shelter, Fit Facility, Reception/Day-Care Centers,Children's Home,Hostel/Boarding, Observational/ Correctional Homes)	24	23	2	5	16	17	5	4	4	1	22	123
No. of Children in Institutions & Children's Home	4347	1166	69	120	873	797	245	361	95	26	1034	9133

The table 1 denotes the institutions and children’s home units, along with the number of children available in these facilities in the 11 provinces of Don Bosco. Bangalore has the greatest number of institutions/Children Homes (24), followed by Chennai (23) and Tiruchy (22). In the contrary, Dimapur and Shillong has the lowest number of Institutions.

Bangalore has the highest number of children in the institutions with 4,347, Chennai follows with 1,166 and Tiruchy with 1034 children. Dimapur and Shillong has 69 and 26 children respectively in their children’s homes, directing towards the necessity to find if there are any gaps for addressing them accordingly as the data suggests significant regional disparity in relation to number of homes in the cities and the children that these facilities house.

### DIAGRAM 1



Assess the capacities and maximizing the utilization of the resources allocated to make optimal use of the existing infrastructures.

Examine other models of alternative care programs.



**AFTER-CARE AND ROOM PLACEMENT FACILITIES FOR YOUNG ADULTS**

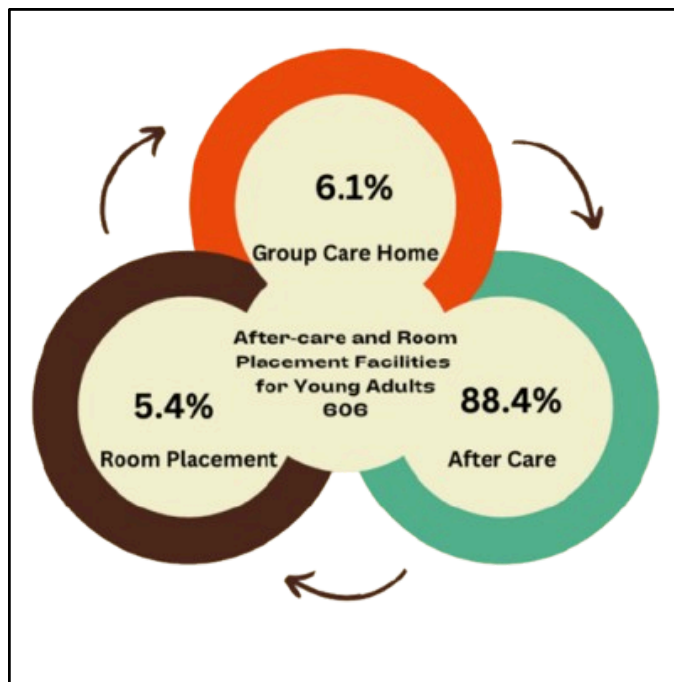
**TABLE 2**

Components	Bangalore	Chennai	Dimapur	Guwahati	Hyderabad	Kolkata	Mumbai	New Delhi	Panjim	Shillong	Tiruchy	Total
Room Placement, Group/Aftercare Centers/Group Care Homes	1	4	0	1	1	3	3	1	0	1	2	17
No. of Young Adults in After Care/ Room Placement/Group Care Homes	82	149	0	72	25	165	87	5	0	9	12	606

The table 2 projects 606 young adults residing in the after-care homes, room placements or the group care homes existing in the 9 provinces of India. Two provinces, Dimapur and Panjim have no related programs or their data was not shared. Kolkata province aids 165 (27.2%) young adults through these facilities, followed by Chennai with 149 (24.6%). Dimapur and Panjim do not show any data because of the absence of the facilities or insufficient data availability.

The distribution is quite uneven, with places like Chennai and Kolkata housing over half of all young people (51.8 percent). Several places, including as Dimapur and Panjim, do not project data on after-care programs. This could reflect discrepancies in after-care services between regions, as well as differences in need and resource allocation in these areas.

**DIAGRAM 2**



Conduct a detailed analysis related to certain locations, have lower or no reach, whether this is due to a lack of need, knowledge, or available resources, and any gaps in service provision which can be addressed.

Regions with a high number of young adults in after-care, may benefit in managing the increased demand of human resources and prevent service overload.



### COLLABORATIVE NETWORKS

TABLE 3

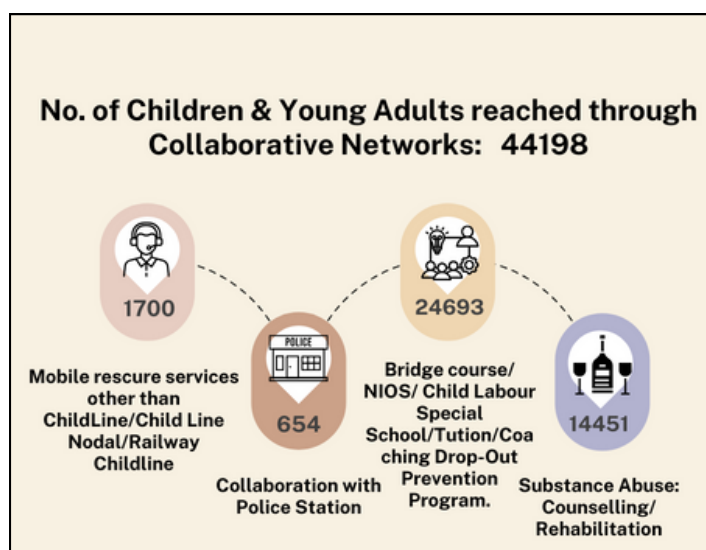
Components	Bangalore	Chennai	Dimapur	Guwahati	Hyderabad	Kolkata	Mumbai	New Delhi	Panjim	Shillong	Tiruchy	Total
No. of Collaborative Networks(ChildLine - Nodal/Collab/Rly, Collaboration with Police Station,Bridge NIOS & Drop-Out Prevention Program,Substance Abuse: Counselling/ Rehabilitation)	218	95	0	2	204	14	73	40	15	1	24	686
No. of Children & Young Adults reached through Collaborative Networks	17993	2800	0	150	6739	3522	5660	2751	855	380	648	41498

The table 3 displays as collaborative networks in 10 provinces, Bangalore steals the highest number with 31.8% of the collaborative networks (218 out of 686) and 43.35% of children and young adults reached through it (17,993 out of 41,498).

Hyderabad follows with 29.7% of the network and reach 16.2% of the young adults and children. As seen in the table there is no documented network in Dimapur, demonstrating there is a potential gap to be followed up with the respective province.

Evidently, the data in the table shows difference in network distribution and outreach efficiency. This implies that there is a need for emphasizing in improving the outreach strategies both quantitatively and qualitatively to create a balance.

DIAGRAM 3



Focus on creating networks and increase outreach initiatives as it is the need of the time especially in disadvantaged areas, also boosting efforts in regions with lower reach.

Increase the impact of each network by reallocating resources to have maximum reach-outs and have visible impact across all regions.



## BRIDGING SKILLS TO EMPLOYMENT

TABLE 4

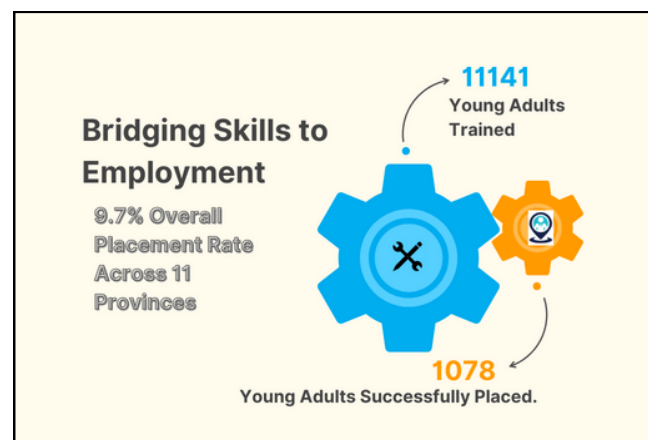
Provinces	Vocational Training Centers	No. of Young Adults Benefitted	Job Placement Programs	Young Adults Job Placed
Bangalore	10	862	7	552
Chennai	9	229	3	106
Dimapur	0	0	0	0
Guwahati	0	0	0	0
Hyderabad	7	663	1	132
Kolkata	7	147	1	46
Mumbai	20	6882	0	0
New Delhi	2	817	0	0
Panjim	3	186	0	0
Shillong	1	586	1	242
Tiruchy	8	769	0	0
<b>Total</b>	<b>67</b>	<b>11141</b>	<b>13</b>	<b>1078</b>

Based on the data in table 4 the organization operates 67 vocational training centers across 5 provinces with Mumbai leading at 29.85% (20 centers). For 6 provinces there is an absence of data, which might be because of insufficient sharing of data or non-existence of the related programs.

With regards to beneficiaries in the vocational centers, Mumbai has the largest share with 61.77%. The job placement has a different and concerning pattern. Despite the high number of young adults trained, only 1,078 got job placements across the 11 provinces which is just 9.7%. Bangalore has the highest reach (552) of placing young adults in jobs with 7 placement programs.

It is to be noted that Mumbai though has the highest number of training centers but separate programs related to job placements are nil. This can be because of absence of data for the respective province.

DIAGRAM 4





Effort should be made to have a better integration between the training provisions and job placement programs to improve the performance providing as a success model, as there is a stark contrast between the two.

The geographical coverage to be expanded for enhancing the effectiveness of interconnecting both the programs of training and providing job opportunities in creating a success model.

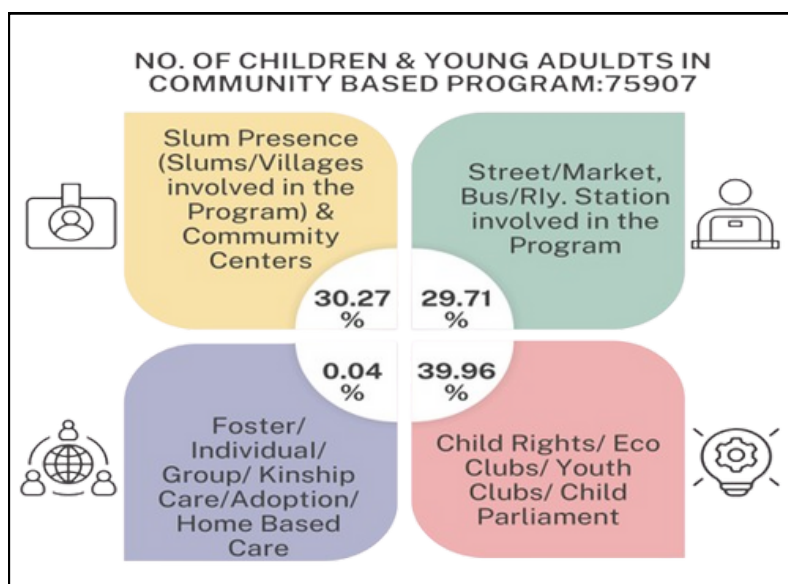
### COMMUNITY-BASED PROGRAMS

TABLE 5

Components	Bangalore	Chennai	Dimapur	Guwahati	Hyderabad	Kolkata	Mumbai	New Delhi	Panjim	Shillong	Tiruchy	Total
No. of Community Based Programs(Slums/ Villages involved in the Program,Street/ Market, Bus/Rly Station involved in the Program,Child Rights/ Safety Net/ Eco Clubs/ Youth Clubs/ Child Parliament,Foster/ Individual/ Group/ Kinship Care/Adoption,Out Reach)	225	36	0	36	653	71	115	105	239	0	335	1815
No. of Children & Young Adults in Community Based Programs	12805	2296	0	2373	34385	3703	2270	5828	1250	0	10997	75907

Table 5 presents data on community-based programs for children and young adults to reveal that there is a total of 1,815 programs under this header reaching up to 75,907 individuals out of 9 provinces. Hyderabad reaching up to 45.29% with 35.97% of the total community-based programs whereas Dimapur and Shillong have no reach. The discrepancies in this data are because of the provinces being nonresponsive irrespective of the efforts and follow-up communications. As a result, the analysis does not include statistics and insights from the respective provinces.

### DIAGRAM 5





Eastern and North Eastern Region to share their data related to the program to give authentic visibility of the actual reach out bringing out a constructive understanding of the programs.

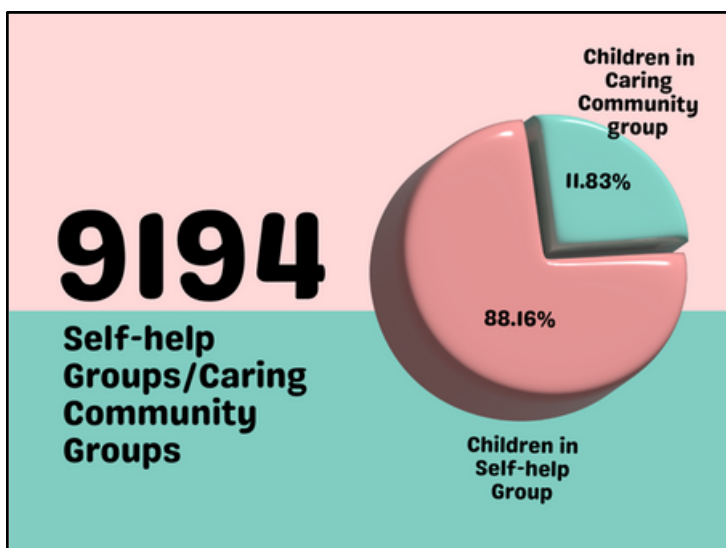
## SELF-HELP GROUPS/CARING COMMUNITY GROUPS

TABLE 6

Components	Bangalore	Chennai	Dimapur	Guwahati	Hyderabad	Kolkata	Mumbai	New Delhi	Panjim	Shillong	Tiruchy	Total
Self-help Groups/Caring community groups	40	240	0	0	0	0	358	95	1	0	98	832
No. of Children Reached	358	2507	0	0	0	0	3963	949	27	0	1390	9194

The data in table 6 having self-help and caring community groups with their impact on children across various provinces in India indicates concentration of the services of the programs in the southern and western regions of India, with limited to no presence in eastern and northeastern regions. Mumbai emerges with 43% of the total groups in the 11 provinces and reaching to 43% of the total number of children. Chennai follows second in line with around 28.8% of the total programs and serving 27% of the total number of children mentioned in the table.

## DIAGRAM 6



Replicate the model adopted by the high performing regions in other regions to increase the programs in the locations.

Analyze the factors and addressing accordingly the reasons for the stark difference in the individuals reached across provinces.

Ensuring data sharing from all regions for a constructive way forward.

**MIGRANT SERVICE**

**TABLE 7**

Components	Bangalore	Chennai	Dimapur	Guwahati	Hyderabad	Kolkata	Mumbai	New Delhi	Panjim	Shillong	Tiruchy	Total
Migrants' Desks	0	5	0	0	2	2	10	1	1	0	3	24
No. of Migrant Workers Reached	0	13500	0	0	555	2464	6472	168	300	0	435	23894

In table 7 it is to be noted that Mumbai has the highest number of migrant desks (41.67%) followed by Chennai (20.8%) and Tiruchy (12.5%). New Delhi, Kolkata and Panjim have a minimal number of migrant desks whereas there is no data available for Bangalore, Dimapur, Guwahati and Shillong.

The total number of migrant workers reached by all the migrant desks available is 23,894 indicating the efforts adopted to engage with the migrant communities and also identifying the regional inequalities. In terms of migrant individual reached through these migrant desks, Chennai leads with 56.5% followed by Mumbai with 27.08% .

**DIAGRAM 7**



Share of the data related to the program will ensure accurate visibility and clearer understanding of the impact.

Evenly distribute of the migrant desks in all regions according to need based services.

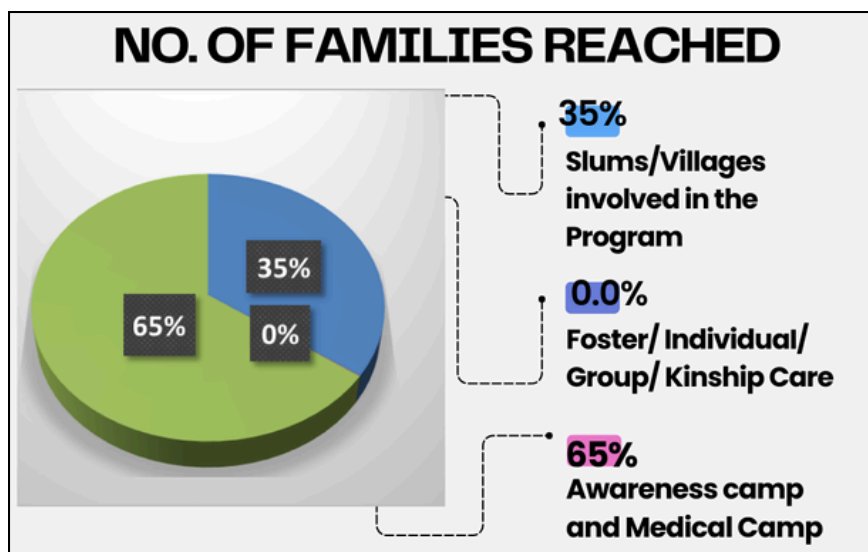
## FAMILIES REACHED THROUGH COMMUNITY-BASED PROGRAMS AND COLLABORATIVE NETWORKS

TABLE 8

Components	Bangalore	Chennai	Dimapur	Guwahati	Hyderabad	Kolkata	Mumbai	New Delhi	Panjim	Shillong	Tiruchy	Total
No. of Families Reached (Slums/Villages involved in the Program, Foster/ Individual/ Group/ Kinship Care/Awareness camps and Medical Camps)	37	9966	0	2376	39655	1623	6307	1055	790	0	3324	65133

Table 8 shows the number of families reached through various programs across all 9 provinces with no data for Dimapur and Shillong indicating limited sharing of data or no reach to families in the two provinces. The programs appear to target a wide range of contexts including slums, communities and various alternative care aspects. Hyderabad has the highest reach of 61% families, followed by Chennai 15.3%. Mumbai, Guwahati and Tiruchy also has significant outreach. The penetration of the programs varies in different regions and the difference in the population densities is to be considered while assessing the initiatives and replicating the successful models.

DIAGRAM 8



Expand the range of services like alternative care, medical camp, awareness campaigns in areas with low or no family engagement as a comprehensive strategy aligning with the future need of the particular area facilitating expansion.

Continue to concentrate in high impact areas where substantial numbers of families are already involved, to increase program effectiveness

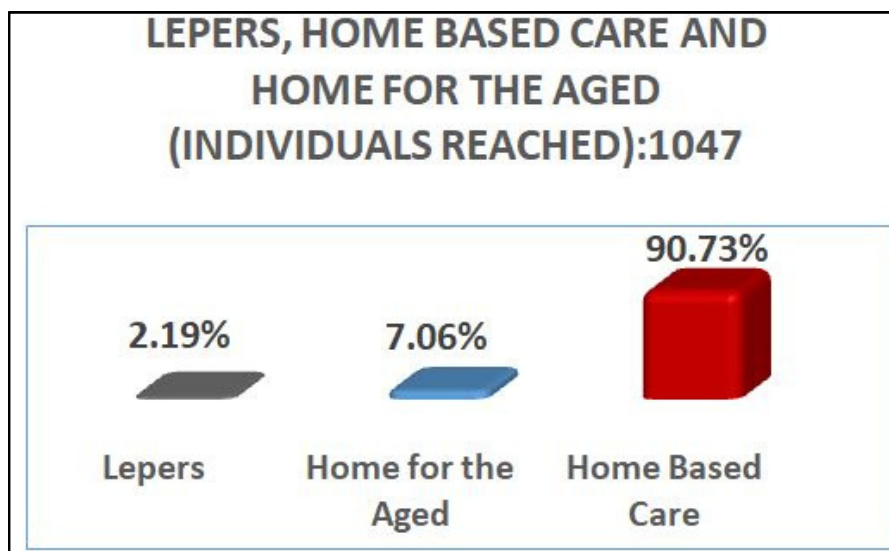
**LEPERS AND HOME FOR THE AGED**

**TABLE 9**

Components	Bangalore	Chennai	Dimapur	Guwahati	Hyderabad	Kolkata	Mumbai	New Delhi	Panjim	Shillong	Tiruchy	Total
Lepers, Home Based Care and Home for the Aged	0	12	0	0	0	0	0	0	0	0	0	12
No. of Individuals/Adults Reached	0	1047	0	0	0	0	0	0	0	0	0	1047

Table 9 indicates the number of individuals in homes for Aged and Leprosy. Chennai has actively reached out to these categories of people alone in the 11 provinces. The other provinces can give a try in developing such programs in their regions as well to reach out to the young at risk indirectly because children of Lepers and individuals needing home-based care are vulnerable as well. Some orphaned and abandoned by parents’ children are also held up with their ailing grandparents. Replicating the programs in Chennai will take care of children at risk indirectly in varied ways.

**DIAGRAM 9**



Expand the program to regions similar demographic demands by formal ties with local organizations and understanding the regional needs.

Explore the areas where there has not been any reach out related to the topic to have insights on the said population size and the potential problems.



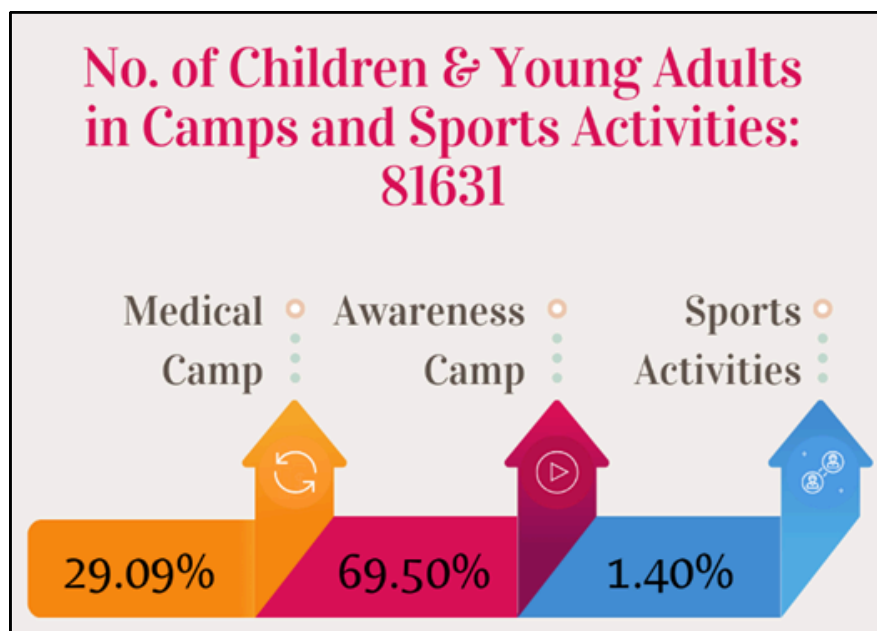
## CAMPS AND SPORTS ACTIVITIES

TABLE 10

Components	Bangalore	Chennai	Dimapur	Guwahati	Hyderabad	Kolkata	Mumbai	New Delhi	Panjim	Shillong	Tiruchy	Total
Awareness Camps, Medical Camps, Sports Activities	8	82	0	72	301	0	150	0	73	0	8	694
No. of Children & Young Adults in Camps and Sports Activities	397	3741	69	0	41579	0	21378	0	90	0	14377	81631

The data displayed in the table 10 consists of various camps and sports activities across all provinces. Hyderabad accounts for 43.37% of the total number of camps and sports activities with participation around 50.93%. Mumbai follows with 21.61% with 26.18% participation of children and young adults. Bangalore, Guwahati, Panjim and Tiruchy make negligible contribution while Dimapur, Kolkata, New Delhi and Shillong exhibit no engagement in camps and activities.

DIAGRAM 10



Prioritize focused campaigns and activities for promoting awareness by collaborating with local community leaders and influencers to invite more children and young adults.

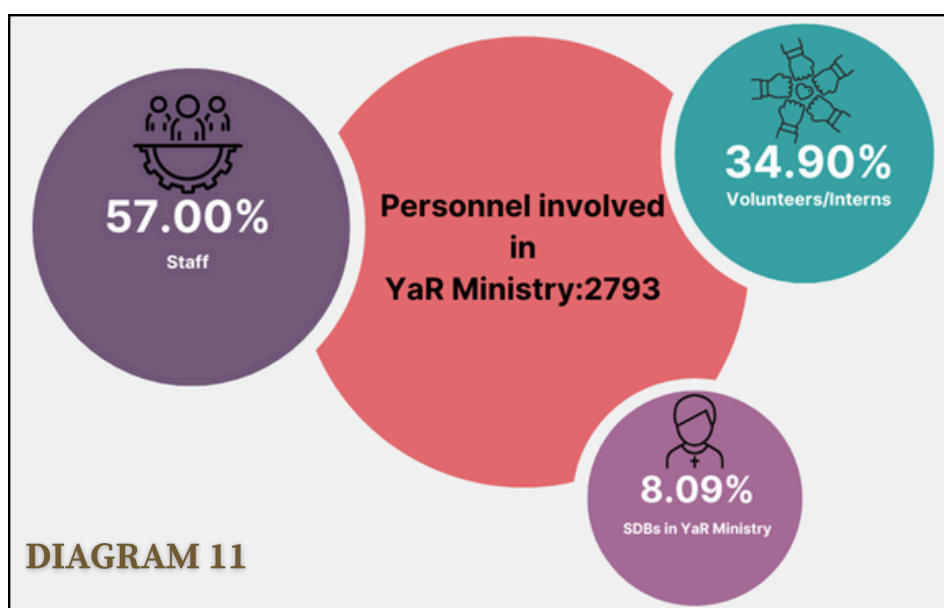


**PERSONNEL INVOLVED IN YOUNG AT RISK (YAR) MINISTRY**

TABLE 11

Components	Bangalore	Chennai	Dimapur	Guwahati	Hyderabad	Kolkata	Mumbai	New Delhi	Panjim	Shillong	Tiruchy	Total
Personnel involved in YaR Ministry (SDB, Staff, Volunteers)	744	407	19	145	239	417	315	230	42	37	198	2793

Table 11 depicts the distribution of personnel participation in the young at-risk ministry across all 11 provinces. Bangalore having the highest number of centers attract around 26.63% of staff followed by Kolkata with 14.93%. Chennai has around 14.57% and Mumbai with 11.27% respectively. Other provinces, such as Hyderabad 8.55%, New Delhi 8.25% and Guwahati 5.2% have significant interest.



The high staff involvement reveals that urban areas have strong infrastructure making them better suited to YaR Ministry’s Operation. Region with smaller demographical location can implement and enhance programs with better human resources.

Invest in training and recruitment in some regions can help to increase local capacity and program effectiveness.

Mentor structure and resource-sharing initiatives could help to transfer knowledge and improve operations in locations with less staff.



## SALESIANS INVOLVED IN SCPCR/JJB/CWC/OTHER GOVT. BODIES

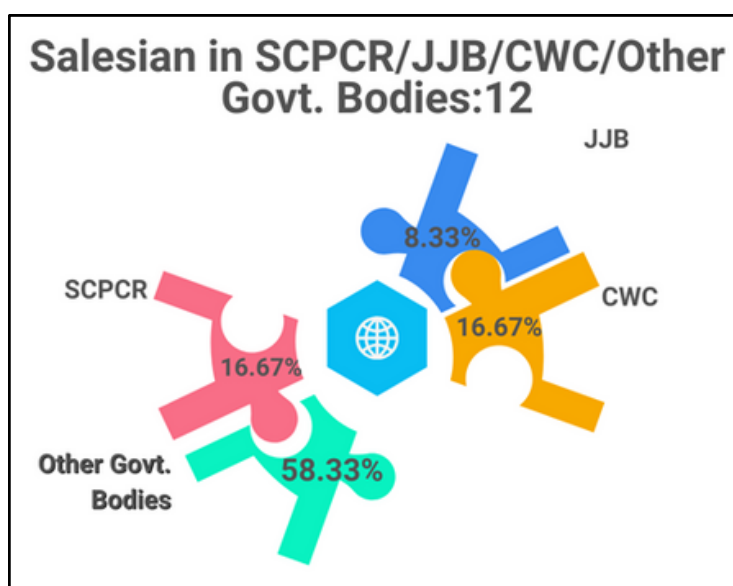
TABLE 12

Components	Bangalore	Chennai	Dimapur	Guwahati	Hyderabad	Kolkata	Mumbai	New Delhi	Panjim	Shillong	Tiruchy	Total
Salesian in SCPCR/JJB/CWC/Other Govt. Bodies	4	0	0	0	4	0	0	1	0	0	3	12

The table above shows the number of Salesians involved in various government departments including the State Commission for Protection of Child Rights, Juvenile Justice Board, State Child Welfare Committee etc. Hyderabad and Bangalore have 33.4% of the total number of Salesians as Government entities. Tiruchy follows with 25% and New Delhi contributes to 8%. The other 7 provinces have not been involved in the Government offices in the given period.

To improve the efficiency of the mission of Don Bosco, there is a need for more participation in government bodies from all provinces at all times, ensuring more balanced regional representation and strengthening the organization's advocacy and influence on child rights.

### DIAGRAM 12



It is critical to actively encourage Salesian in SCPCR, JJB, SCWC, or other government bodies in order to improve child protection and welfare advocacy throughout pan India.

Provide specialized training programs for Salesian in cities with little to no representation in government entities.

This will provide them with the required skills and information to effectively engage with child protection systems and government structures, resulting in increased collaboration and advocacy.

Establish a mentorship or exchange program in which professionals from well represented cities to guide and support those from underrepresented areas in their interactions with government agencies, sharing best practices and success techniques.

## CONCLUSION

The DB YaR National Forum exhibits exceptional impact in the society, reaching over 75,900 individuals through community-based programs and supporting over 41,400 children through collaborative networks. The inclusive approach, extending from institutional care, vocational training, and community engagement, projecting commitment to transform young lives into responsible citizens.

The statistical report of 2023-2024 of DB YaR National Forum presents unequal distribution of programs and resources across the 11 provinces in India. There is a significant need for enhanced focus on the smaller locations and urban areas taking all the attention. The disparity in program performance and local needs require more examination.

However, the data in the tables shows areas of development despite the challenges. The provinces demonstrating successful programs and initiatives can serve as a model for other areas to improve their efficiency. All the inferences are deliberated to a balanced approach to children at risk. Targeted interventions tailored to the gaps might boost the efforts for improvement in the resource distribution, program efficacy and better coverage in the demographic locations.

Their strategic presence all over India underscores their extensive reach and adaptability to diverse regional needs. With strong vocational training programs benefiting over 11,000 young adults and migrant services reaching nearly 24,000 workers, the Forum continues to make substantial strides in empowering vulnerable youth.



# SUMMARY OF STATISTICAL REPORT



STATISTICAL REPORT: June 2023 - May 2024

DON BOSCO NATIONAL FORUM FOR THE YOUNG AT RISK

Interventions with the Young at Risk in the Salesian Provinces of India - June 2022- May 2023

	Centers & Services	Interventions with the Young at Risk in the Salesian Provinces of India - June 2022- May 2023																Total
		Bangalore	Chennai	Dimapur	Guwahati	Hyderabad	Kolkata	Mumbai	New Delhi	Panaji	Shillong	Trichy						
A	Open Shelter, Fit Facility, Reception/Day-Care Centers	4	2	0	0	6	7	2	0	0	0	0	0	0	0	0	4	25
B	Children's Home	3425	271	0	0	406	546	75	0	0	0	0	0	0	0	0	475	5198
C	Children's Home	16	5	2	5	10	0	3	4	1	1	1	1	1	1	1	4	51
D	Hostel/Boarding	760	246	69	120	467	0	170	361	40	26	167	167	2426	0	0	18	18
E	Hostel/Boarding	4	2	0	0	0	10	0	0	2	0	0	0	0	0	0	0	0
F	Community Centers in Slums & Villages	162	350	0	0	0	251	0	0	0	55	0	0	0	0	0	0	818
G	Community Centers in Slums & Villages	5	4	0	0	173	30	17	5	8	0	1	279	0	0	0	1	279
H	Total No. of Centers	2	4	0	0	36	30	13	3	3	0	12	105	0	0	0	12	105
I	No. of Families Reached	0	5000	0	0	16679	1200	5000	1055	250	0	0	29184	0	0	0	0	29184
J	No. of Individuals/Adults Reached	300	500	0	0	15889	0	550	1538	500	0	0	19277	0	0	0	0	19277
K	No. of Children Reached	248	119	0	2373	14187	1860	0	2478	300	0	1416	22981	0	0	0	0	22981
L	Program Presences in Street/Market, Bus/Rly. Station	22	0	0	0	97	20	38	7	215	0	5	404	0	0	0	0	404
M	No. of Centers	2	2	0	0	97	20	0	7	0	0	2	128	0	0	0	0	128
N	No. of Families Reached	0	0	0	0	5796	410	0	385	0	0	0	6591	0	0	0	0	6591
O	No. of Individuals/Adults Reached	0	0	0	0	10798	0	0	683	780	0	0	12261	0	0	0	0	12261
P	No. of Children Reached	4349	0	0	0	14074	1275	1350	1037	330	0	141	22556	0	0	0	0	22556
Q	Collaboration with Police Station	39	0	0	0	0	0	0	4	0	0	0	43	0	0	0	0	43
R	No. of Children Reached	352	0	0	0	0	0	0	302	0	0	0	654	0	0	0	0	654
S	Observational/Correctional Homes/Prison Ministry	0	14	0	0	0	0	0	0	0	0	0	14	0	0	0	0	29
T	Bridge course/NIOS/Child Labour Special School/Tuition/Coaching Drop-Out Prevention Program	0	299	0	0	0	0	0	0	0	0	0	392	0	0	0	0	691
U	Bridge course/NIOS/Child Labour Special School/Tuition/Coaching Drop-Out Prevention Program	167	95	0	2	200	6	72	34	15	1	23	615	0	0	0	0	615
V	No. of Children Reached	5787	2800	0	150	5235	1142	5605	2123	828	380	643	24693	0	0	0	0	24693
W	Child Rights/Eco Clubs/Youth Clubs/Child Parliament	198	32	0	0	383	21	60	93	16	0	329	1132	0	0	0	0	1132
X	No. of Children Reached	8174	2177	0	0	6122	568	920	2313	620	0	9440	30334	0	0	0	0	30334
Y	Substance Abuse: Counseling/Rehabilitation	12	0	0	0	4	6	1	2	0	0	1	26	0	0	0	0	26
Z	No. of Children/Young Adults Reached	11854	0	0	0	1504	680	55	326	27	0	5	14451	0	0	0	0	14451
AA	Foster/Individual/Group/Kinship Care/Adoption/Home Based Care	34	0	0	0	2	0	0	0	0	0	0	36	0	0	0	0	36
AB	No. of Children Reached	37	0	0	0	2	0	0	0	0	0	0	36	0	0	0	0	36
AC	No. of Families Reached	1	4	0	1	1	3	3	1	0	0	1	17	0	0	0	0	17
AD	Room Placement, Group/Aftercare Centers	82	149	0	72	25	165	87	5	0	9	12	606	0	0	0	0	606
AE	No. of Young Adults Reached	10	9	0	0	7	7	20	2	3	1	8	67	0	0	0	0	67
AF	Vocational Training Centers	862	229	0	0	663	147	6882	817	186	586	769	11141	0	0	0	0	11141
AG	No. of Young Adults Benefitted	7	3	0	0	1	1	0	0	0	0	0	13	0	0	0	0	13
AH	Job Placement Programs	552	106	0	0	132	46	0	0	0	242	0	1078	0	0	0	0	1078
AI	Young Adults Job Placed	0	5	0	0	2	10	1	1	0	0	3	24	0	0	0	0	24
AJ	Migrants' Decks	0	13500	0	0	555	2464	6472	168	300	0	435	23894	0	0	0	0	23894
AK	No. of Migrant Workers Reached	40	240	0	0	0	0	358	95	1	0	98	832	0	0	0	0	832
AL	Self-help Groups/Caring community groups	358	2507	0	0	0	0	3963	949	27	0	1390	9194	0	0	0	0	9194
AM	No. of Children Reached	8	82	0	72	301	0	150	0	73	0	8	694	0	0	0	0	694
AN	Awareness Camps, Medical Camps, Sports Activities	5	55	0	44	0	8	0	0	0	0	4	116	0	0	0	0	116
AO	No. of Centers	0	4966	0	2376	17178	0	1307	0	155	0	3324	29306	0	0	0	0	29306
AP	Individuals/Adults Reached	30	5530	0	40	42416	0	19550	0	480	0	10785	78831	0	0	0	0	78831
AQ	No. of Children Reached	397	3741	69	0	41579	0	21378	0	90	0	14377	81631	0	0	0	0	81631
AR	Leapers, Home Based Care and Home for the Aged	0	12	0	0	0	0	0	0	0	0	0	12	0	0	0	0	12
AS	No. of Individuals/Adults Reached	0	1047	0	0	0	0	0	0	0	0	0	1047	0	0	0	0	1047
AT	Mobile Rescue/Reach Out Services	0	0	0	0	0	2	0	0	0	0	0	2	0	0	0	0	2
AU	No. of Children Reached	0	0	0	0	0	1700	0	0	0	0	0	1700	0	0	0	0	1700
AV	Salesian in SCPCR/JIB/CWC/Other Govt. Bodies	4	0	0	0	4	0	0	1	0	0	0	12	0	0	0	0	12
AW	SDBs in YAR Ministry	63	39	0	6	22	10	18	19	13	9	27	226	0	0	0	0	226
AX	Staff in YAR Ministry	434	247	19	100	173	196	156	145	25	28	69	1592	0	0	0	0	1592
AY	Volunteers/Interns in YAR Ministry	247	121	0	39	44	211	141	66	4	0	102	975	0	0	0	0	975



# SUMMARY OF DATA ANALYSIS

SUMMARY OF THE DATA ANALYSIS: June 2023 - May 2024												
Centers & Services	Bangalore	Chennai	Dinapur	Guwahati	Hyderabad	Kolkata	Mumbai	New Delhi	Panjim	Shillong	Trichy	Total
	BNK	INM	IND	ING	INH	INC	INB	INN	INP	INS	INT	
No. of Institutions & Children's Home	24	23	2	5	16	17	5	4	4	1	22	123
No. of Children in Institutions & Children's Home	4347	1166	69	120	873	797	245	361	95	26	1034	9133
Room Placement, Group/Aftercare Centers/Group Care Homes	1	4	0	1	1	3	3	1	0	1	2	17
No. of Young Adults in After Care/ Room Placement/Group Care Homes	82	149	0	72	25	165	87	5	0	9	12	606
No. of Community Based Programs	225	36	0	36	653	71	115	105	239	0	335	1815
No. of Children & Young Adults in Community Based Programs	12805	2296	0	2373	34385	3703	2270	5828	1250	0	10997	75907
No. of Collaborative Networks	218	95	0	2	204	14	73	40	15	1	24	686
No. of Children & Young Adults Reached through Collaborative Networks	17993	2800	0	150	6739	3522	5660	2751	855	380	648	41498
Migrants' Decks	0	5	0	0	2	2	10	1	1	0	3	24
No. of Migrant Workers Reached	0	13500	0	0	555	2464	6472	168	300	0	435	23894
No. of Families Reached	37	9966	0	2376	39655	1623	6307	1055	790	0	3324	65133
No. of Individual reached(Except Children)	330	6030	0	40	69103	0	20100	2221	1760	0	10785	110369
Awareness Camps, Medical Camps, Sports Activities	8	82	0	72	301	0	150	0	73	0	8	694
No. of Children & Young Adults in Camps and Sports Activities	397	3741	69	0	41579	0	21378	0	90	0	14377	81631
Vocational Training Centers	10	9	0	0	7	7	20	2	3	1	8	67
No. of Young Adults Benefitted	862	229	0	0	663	147	6882	817	186	586	769	11141
Job Placement Programmes	7	3	0	0	1	1	0	0	0	1	0	13
Young Adults Job Placed	552	106	0	0	132	46	0	0	0	242	0	1078
Lepers, Home Based Care and Home for the Aged	0	12	0	0	0	0	0	0	0	0	0	12
No. of Individuals/Adults Reached	0	1047	0	0	0	0	0	0	0	0	0	1047
Self-help Groups/Caring community groups	40	240	0	0	0	0	358	95	1	0	98	832
No. of Children Reached	358	2507	0	0	0	0	3963	949	27	0	1390	9194
Salesian in SCPGR/JIB/GWC/Other Govt. Bodies	4	0	0	0	4	0	0	1	0	0	3	12
Personnel Involved in YAR Ministry (SDB, Staff, Volunteers, Interns)	744	407	19	145	239	417	315	230	42	37	198	2793







## DON BOSCO NATIONAL FORUM FOR THE YOUNG AT RISK

Bangalore- Chennai- Dimapur- Guwahati- Hyderabad- Kolkata- Mumbai- New Delhi- Panjim- Shillong- Tiruchy

C-991 Don Bosco House SPCI, Sector 7 Dwarka, New Delhi -110077



91 8851653538



Info@dbyarforum.org



<https://dbyarforum.org/>